

ที่ มส ๐๐๒๓.๓/ว ๓๑๒



สำนักงานส่งเสริมการปกครองท้องถิ่น
จังหวัดแม่ฮ่องสอน
ถนนขุนลุมประพาส มส ๕๘๐๐๐

๑๘ กรกฎาคม ๒๕๖๑

เรื่อง ประชาสัมพันธ์หลักสูตรระดับปริญญาโท ระยะเวลา ๑ ปี และหลักสูตรระดับปริญญาโท ระยะเวลา ๒ ปี
สาขานโยบายสาธารณะ

เรียน นายกองค้การบริหารส่วนจังหวัดแม่ฮ่องสอน, นายกเทศมนตรีเมืองแม่ฮ่องสอน, และท้องถิ่นอำเภอทุกอำเภอ

สิ่งที่ส่งมาด้วย สำเนาหนังสือกรมส่งเสริมการปกครองท้องถิ่น ที่ มท ๐๘๑๐.๒/๒๑๖๗
ลงวันที่ ๑๒ กรกฎาคม ๒๕๖๑

จำนวน ๑ ชุด

ด้วยกรมส่งเสริมการปกครองท้องถิ่น แจ้งว่า National Graduate Institute for Policy Studies (GRIPS) ขอความร่วมมือกรมส่งเสริมการปกครองท้องถิ่น ประชาสัมพันธ์หลักสูตรระดับปริญญาโท ระยะเวลา ๑ ปี และหลักสูตรระดับปริญญาโท ระยะเวลา ๒ ปี สาขานโยบายสาธารณะ แก่บุคลากรในสังกัด กรมส่งเสริมการปกครองท้องถิ่นและองค์กรปกครองส่วนท้องถิ่นที่สนใจ เพื่อสมัครเข้าศึกษาระดับปริญญาโท ในปีการศึกษา ๒๕๖๒ ซึ่งจะเปิดรับสมัครทางออนไลน์ ระหว่างเดือนสิงหาคมถึงต้นเดือนพฤศจิกายน ๒๕๖๑

สำนักงานส่งเสริมการปกครองท้องถิ่นจังหวัดแม่ฮ่องสอนพิจารณาแล้ว จึงขอแจ้ง ประชาสัมพันธ์ให้องค์กรปกครองส่วนท้องถิ่นทราบโดยทั่วกัน และสำหรับท้องถิ่นถิ่นอำเภอนั้น สำนักงาน ส่งเสริมการปกครองท้องถิ่นจังหวัดแม่ฮ่องสอน ขอความร่วมมือแจ้งให้องค์กรปกครองส่วนท้องถิ่นในพื้นที่ ทราบต่อไป

จึงเรียนมาเพื่อทราบและพิจารณาดำเนินการ

ขอแสดงความนับถือ

(นายชินกร ดิสูยา)

นักส่งเสริมการปกครองท้องถิ่นชำนาญการพิเศษ รักษาการแทน
ท้องถิ่นจังหวัดแม่ฮ่องสอน

กลุ่มงานส่งเสริมและพัฒนาท้องถิ่น

โทร./โทรสาร ๐ ๕๓๖๑ ๔๓๗๘

3
45249

เว็บไซต์กรมส่งเสริมการปกครองท้องถิ่น
สำนักงานส่งเสริมการปกครองท้องถิ่น
จังหวัดแม่ฮ่องสอน
เลขที่รับ ๔๕๖๗
วัน/เดือน/ปี ๑๖ ก.ค. ๒๕๖๑
เวลา



เลขที่รับ ๒๒๗๗
วันที่ ๑๖ ก.ค. ๒๕๖๑
เวลา

ที่ มท ๐๘๑๐.๒ / ๒๑๑๗

ถึง สำนักงานส่งเสริมการปกครองท้องถิ่นจังหวัดทุกจังหวัด

ด้วย National Graduate Institute for Policy Studies (GRIPS) ขอความร่วมมือกรมส่งเสริมการปกครองท้องถิ่นประชาสัมพันธ์หลักสูตรระดับปริญญาโท ระยะเวลา ๑ ปี และหลักสูตรระดับปริญญาโท ระยะเวลา ๒ ปี สาขา นโยบายสาธารณะ แก่บุคลากรในสังกัดกรมส่งเสริมการปกครองท้องถิ่นและองค์กรปกครองส่วนท้องถิ่นที่สนใจ เพื่อสมัครเข้าศึกษาระดับปริญญาโทในปีการศึกษา ๒๕๖๒ ซึ่งจะเปิดรับสมัครทางออนไลน์ ระหว่างเดือนสิงหาคมถึงต้นเดือนพฤศจิกายน ๒๕๖๑

กรมส่งเสริมการปกครองท้องถิ่น จึงขอความร่วมมือสำนักงานส่งเสริมการปกครองท้องถิ่นจังหวัดประชาสัมพันธ์หลักสูตรปริญญาโทดังกล่าวให้บุคลากรในสังกัดและองค์กรปกครองส่วนท้องถิ่นทราบ รายละเอียดปรากฏตามเอกสารที่แนบมาพร้อมนี้

เรียน กอปร.จังหวัดแม่ฮ่องสอน
- เพื่อไปติดตาม เสนอพิจารณา
- กรม กอปร.ร่วมจัด
- วิทยาลัยส่งเสริมการปกครองท้องถิ่น
หรือ National Graduate
Institute for Policy
Studies (GRIPS)
ตามเลขที่ มท ๐๘๑๐.๒ / ๒๑๑๗
ในนามของ กอปร.แม่ฮ่องสอน



(นายวิเชษฐ์ ชุมกล้า)
กองพัฒนาและส่งเสริมการบริหารงานท้องถิ่น
ส่วนวิชาการและวิจัยเพื่อการพัฒนาท้องถิ่น
โทรศัพท์ ๐-๒๒๕๑-๙๐๐๐ ต่อ ๒๒๑๒
โทรสาร ๐-๒๒๕๓-๑๘๑๒
ผู้ประสานงาน
นางสาวภทรนาถ วิบูลสุข ๐๘๙-๙๖๙-๒๕๓๙

- กทว
- ...

(นายชินกร ดีสุยา)

นักส่งเสริมการปกครองท้องถิ่นชำนาญการพิเศษ รักษาการแทน
ท้องถิ่นจังหวัดแม่ฮ่องสอน



Public Policy Program

NATIONAL GRADUATE INSTITUTE FOR POLICY STUDIES



Study in English

GRIPS is a leader in English-based education in Japan. You will learn from world-class academics and leading policy makers.

The Public Policy Program aims to educate leaders, public managers, and policy analysts in the policy tools needed for efficient governance.

The one-year program (MP1) equips mid-career managers and leaders with the fundamental skills and knowledge needed to be effective managers in the public sector. Students develop familiarity with all phases of the policy cycle. They are required to write a policy report as partial fulfilment of the degree of Master of Public Policy or Master of Public Administration.

The two-year program (MP2) provides pre- and early-career professionals and staff members with the technical skills needed to be professional policy analysts. The program provides a strong platform for advanced research (including doctoral studies). Students are required to write a master's thesis as partial fulfilment of the degree of Master of Arts in Public Policy.



Vibrant Tokyo

Study and live in Japan's bustling capital, undeniably one of the world's most captivating cities.



Summer Program

The capstone of the GRIPS experience, offering an exciting range of events to enhance your practical policy-making skills.

1

ACADEMIC & PRAGMATIC

The combination of academic & practical courses is GRIPS hallmark

2

FLEXIBLE CURRICULUM

You may choose from a wide variety of recommended and elective courses

3

GLOBAL NETWORK

You will join a robust network of over 4500 GRIPS alumni in more than 100 countries

Admissions

Qualifications

You are:

- An ambitious individual with a career plan that involves leadership
- Aged in your mid 20's to mid 30's
- A mid-career government professional wishing to enhance your skills with a professional graduate qualification
- Proficient in English (TOEFL PBT 550; iPT 79 or equivalent)

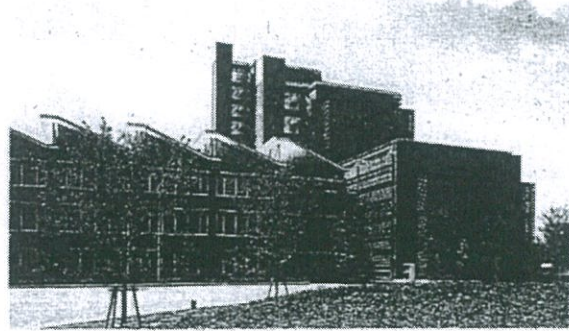


Photo: Masao Nishikawa

Scholarships

Full scholarships - funded by the Asian Development Bank (ADB), the Japanese government (MEXT) and others - are available for qualified candidates.

Important Dates*

- Online applications open: Early August 2018
- Application deadline: November 2018
- Admissions notification: May-July 2019
- Enrollment: October 2019

* Please check our website for exact dates

Degrees offered

- Master of Public Policy (MP1)
- Master of Public Administration (MP1)
- Master of Arts in Public Policy (MP2)



Gateway to
Global Leadership

GRIPS

Career Destinations

Graduates from this program are expected to hold executive positions in national or local government and international organizations, or to be researchers in public policy. Graduates' career paths include Office of the President/Prime Minister, Ministry of Finance, Ministry of Commerce & Industry, Ministry of Labour & Human Resources, Ministry of Home Affairs, Ministry of Foreign Affairs, Ministry of Public Administration, Ministry of Land & Energy, Central Bank, Development Bank, Stock Exchange, Public Utilities (Electricity, Gas, Water) and Universities

About GRIPS

The National Graduate Institute for Policy Studies (GRIPS) is a global hub for world-class policy research and education. We prepare public policy leaders and professionals who will play key roles in democratic governance, and we are committed to providing quality education that meets the needs of both students and the government agencies they serve. Our core tenets are an interdisciplinary approach to policy research that is set within a truly multinational environment and a focus on equipping public policy professionals with the skills they need to serve effectively on the world stage.

Further Information & Inquiries

Please check our website for program details and application procedures.

GRIPS homepage: <http://www.grips.ac.jp>

Admissions Office: <http://www.grips.ac.jp/en/admissions/index/>

If you have any questions, please do not hesitate to contact our Admissions Office.

Email: admissions@grips.ac.jp

Phone: +81-3-6439-6046

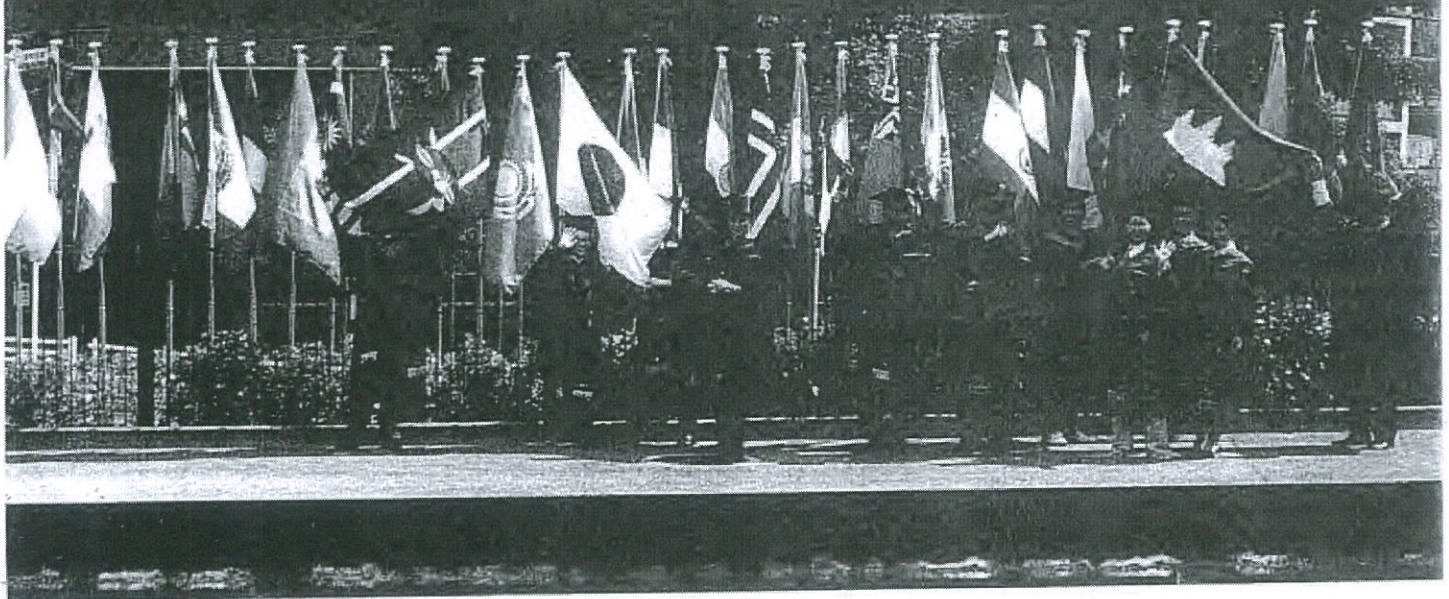
Fax: +81-3-6439-6050

Address: 7-22-1 Roppongi, Minato-ku, Tokyo 106-8677



NATIONAL GRADUATE INSTITUTE FOR POLICY STUDIES

2017-2018



*Gateway to
Global Leadership*





Message from the President

The National Graduate Institute for Policy Studies (GRIPS) conducts policy research related to the current affairs of Japan and the world and provides graduate education in advanced policy studies designed primarily for mid-career administrative and government officials from Japan and other countries. Students benefit from high-quality instruction in economics, political science, public administration, international relations, engineering, and other subjects and from the examination of selected case studies reflecting the experience of Japan and other Asian countries in the course of modernization and rapid economic growth.

I hope that you will choose to come to GRIPS and seize the opportunity to engage in friendly competition with people who, like you, will go on to be future leaders.

Akihiko Tanaka

Why GRIPS?

- Select from a wide range of advanced degree options and specialize in an area that interests you
- Combine discipline-specific learning with advanced training in leadership, interdisciplinary cooperation, and effective management
- Study in English, learning from world-class academics and leading policy makers
- Network and liaise worldwide with over 4,000 distinguished alumni involved in policy making
- Engage with a richly diverse student body and faculty

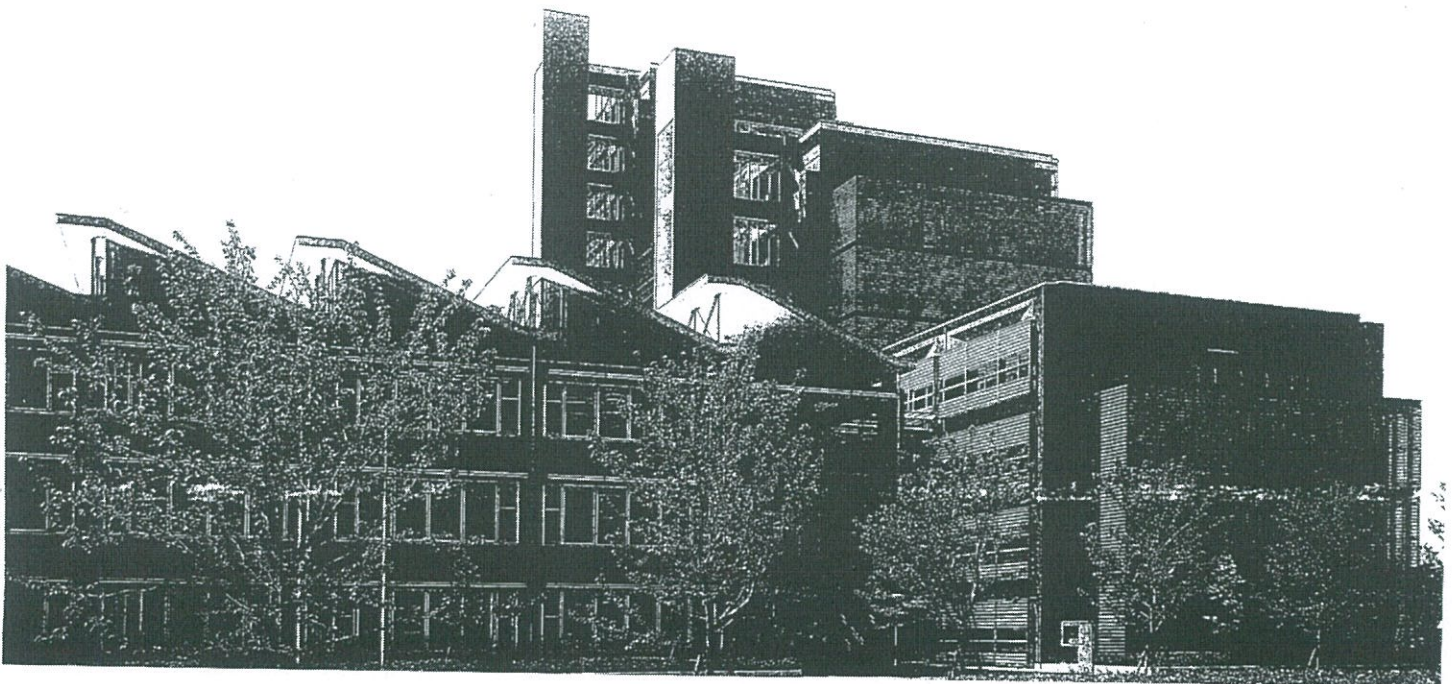
Target Students

- Mid-career public officials with strong leadership and managerial potential
- Individuals with strong academic capabilities and the desire to become professional policy analysts or to pursue an academic career

Brief History

In 1977, the Graduate School of Policy Science (GSPS) was established at Saitama University to promote interdisciplinary policy research and education. In 1997, GRIPS succeeded GSPS to become an independent national graduate university with the mandate to promote high-level policy research and respond to various domestic and international needs by drawing on international intellectual cooperation.

Logo to commemorate the 20th anniversary of the founding of the National Graduate Institute for Policy Studies (GSPS 40th)



GRIPS at a Glance (as of May 2017)

GRIPS is the only national stand-alone graduate school for policy studies in Japan.

- **Location:** Central Tokyo (Roppongi)
- **Degrees awarded:**
Master's degrees and doctorates
- **Language of instruction:** English
- **Academic calendar:** October-September
- **Financial assistance:** More than 90% of international students have full scholarships
- **Total number of students:** 393
- **Average student age:** 33
- **International students:** 66%
- **Student-faculty ratio in master's programs:** 3 to 1
- **Alumni working in the public sector:** 77%
- **Number of alumni:** Over 4,000

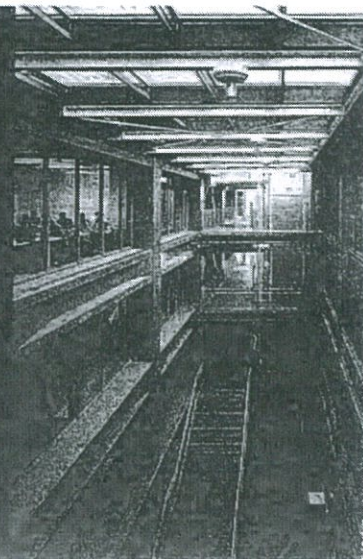


Photo by Masao Nishikawa

Our Programs

Master's Programs

• Young Leaders Program

This program focuses on exposing students in a systematic way to the fundamentals of politics, government and public administration, public policy, management and leadership. The program prepares students to work as senior executives and leaders in the national, sub-national and local governments as well as in other public sector organizations.

• One-year Master's Program of Public Policy (MP1)

This program equips managers and leaders with the skills and knowledge necessary for analysis, implementation, and evaluation of public policy. Students who enroll in this program become part of a global network of leaders.

• Two-year Master's Program of Public Policy (MP2)

This program conveys technical policy analysis skills to early-career professionals in local or national governments, international organizations, or policy institutes.

• Macroeconomic Policy Program

The aim of this program is to enable macroeconomic policy professionals to plan and maintain robust national economies by equipping them with an understanding of macroeconomic fluctuations and the roles of monetary and fiscal policies in domestic and global economies.

• Public Finance Program

This program provides students with the conceptual understanding and technical competence they need to become leaders in taxation and customs.

• Economics, Planning and Public Policy Program

This is a joint two-year GRIPS-Indonesia Linkage program offered in conjunction with top national universities in Indonesia. The program is aimed at preparing local and central government officials who will contribute to good governance and economic development in Indonesia.

• Disaster Management Policy Program

This program equips professionals from developing countries with effective approaches to, and techniques for, coping with natural disasters, as well as with engineering knowledge and skills needed to minimize seismic risks and counteract widespread water hazards.

• Maritime Safety and Security Policy Program

This program is designed and administered jointly by GRIPS and the Japan Coast Guard Academy. Students benefit from both institutions' resources in the fields of public policy, security studies, maritime safety, and maritime security.

• Graduate Program in Japanese Language and Culture

This program promotes rigorous examination of Japanese pedagogy and Japanese culture. Graduates of this program become leaders in Japanese language

Ph.D. Programs

Our Ph.D. programs prepare a new generation of public policy researchers, scholars, and professionals. The programs stress the development of theoretical, conceptual, and methodological knowledge as well as advanced skills needed for high-level policy analysis in government, universities, and international organizations. The GRIPS Global Governance Program and the Policy Analysis Program are 5-year doctoral programs designed for bachelor's degree holders; all other doctoral programs are 3-year programs designed for master's degree holders.

5-Year Ph.D. Programs

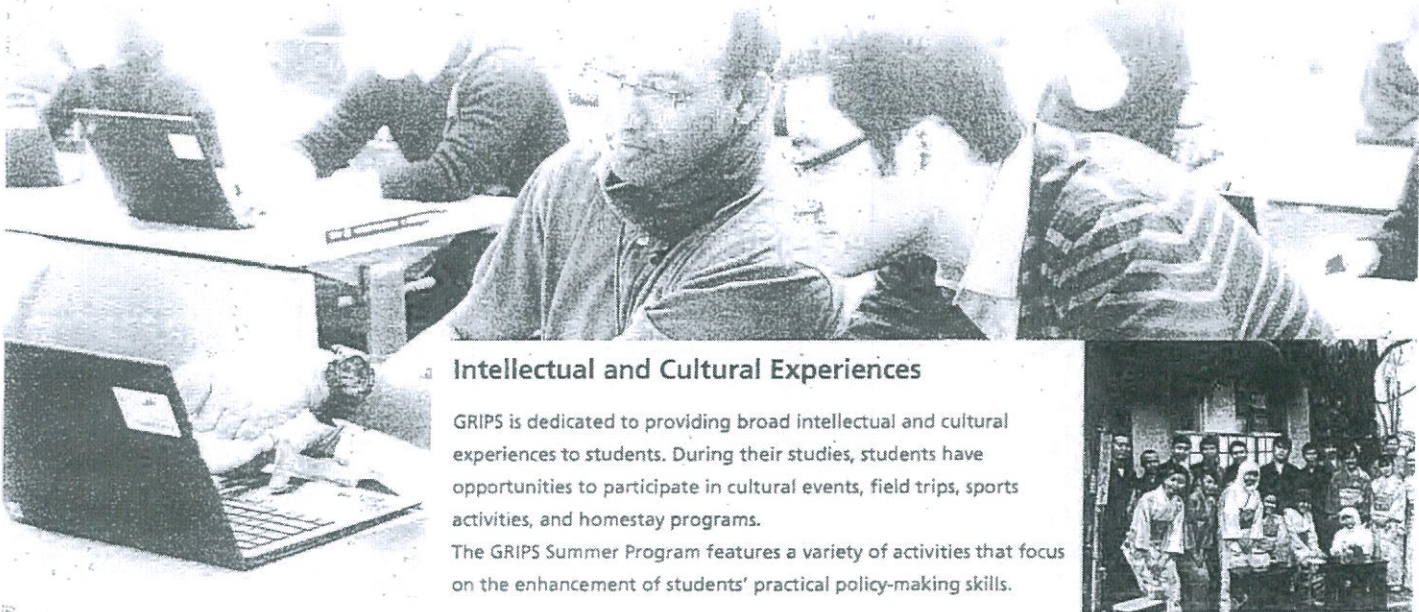
- GRIPS Global Governance Program (G-cube)
- Policy Analysis Program

3-Year Ph.D. Programs

- Public Policy Program
- Security and International Studies Program
- State Building and Economic Development Program
- Disaster Management Program
- Science, Technology and Innovation Policy Program
- Graduate Program in Japanese Language and Culture



Students at GRIPS share the same time and space, studying together in the same classrooms, thinking together about—and debating—the same issues, and taking advantage of multiple opportunities for collaboration and networking, which often leads to lifelong friendships and connections.



Intellectual and Cultural Experiences

GRIPS is dedicated to providing broad intellectual and cultural experiences to students. During their studies, students have opportunities to participate in cultural events, field trips, sports activities, and homestay programs.

The GRIPS Summer Program features a variety of activities that focus on the enhancement of students' practical policy-making skills.

Our Faculty

GRIPS boasts a nearly 300-member faculty, which includes world-class academics and distinguished practitioners with many years of experience in public- or private-sector policy analysis and management. Our faculty's expertise spans a wide array of policy issues and areas of research, which allows us to offer a broad range of courses in policy-related fields.

Center for Professional Communication

The mission of the Center for Professional Communication is to support GRIPS' students, faculty, and staff in developing effective professional communication skills and competencies needed to communicate productively in an environment of multiple stakeholders. To this end, we offer a range of instruction and support in fundamental areas of professional communication in English and Japanese including policy paper writing, professional speaking, grant proposal writing, and digital communications. We also provide opportunities for cultural and academic exchanges through a self-access learning center, organize seminars and special events related to all aspects of professional communication, and prepare customized materials for students and staff on academic and professional writing and language learning.

Student Support

We understand the challenges international students face when adjusting to a new culture and environment. Accordingly, the Student Office provides substantial assistance to international students so that they can focus on accomplishing their academic goals at GRIPS. The Student Office assists with a variety of matters such as accommodation arrangements, immigration procedures, and international cultural exchanges. International students will be assigned to off-campus accommodations in the Tokyo metropolitan area based on their requests. At GRIPS, the Health Services Center provides medical and psychological counseling services to all students.





"The most important thing for me is that I could learn—often first-hand from my fellow students—about current global issues and international efforts

that are going on in the world. GRIPS gave me precious friends and opened my eyes to the world."

(Alumni: Ayako Tamiya, Japan; International Development Studies Program, 2010)



"GRIPS is principally about multidisciplinary and practical approaches to the study of policy and economics. It is also about the need to better

understand the political economy of Japan and Asia, as a whole, from a global public policy perspective. For me, as a student from Africa, this was very useful. Staff at GRIPS are available 24/7, and of course, the multicultural and professional network at GRIPS propels one to become a truly global citizen."

(Alumni: Tenywa Edward, Uganda; One-year Master's Program of Public Policy, 2012)



Tailor-Made Short-Term Training



The Executive Development Center for Global Leadership (CGL) was established in 2013 in response to an increasing demand for short-term training for government officials, particularly for senior executives, middle management level officials and public policy professionals.

GRIPS has responded to specific requests from foreign government organizations by providing tailor-made short-term training programs matched to specific requests and necessity. GRIPS provides various kinds of short-term training programs including following topics.

Examples of Short-Term Training Program Topics:

- Leadership Development and Management for the 21st Century
- Public Management in General
- Structures and Processes of Government
- Organizational Management
- Civil Service Systems and Human Resource Management
- Tools of Government
- Legal Systems and Legislative Review
- Administrative Reform and Innovation
- Good Governance
- Trust in the Government
- Ethics and Anti-Corruption
- Local Governance in General
- Local Government Administration
- Local Government Financial Administration
- Management of Inter-Governmental Relations
- Public Policy Analysis
- Selected Substantive Policies

In response to specific demands, short-term training programs often contain a mixture of the following components:

- Lectures delivered by government officials, business executives, specialists from research institutions, and professors from GRIPS and other universities
- Field trips or visits to government offices and other places of interests related to themes of training
- Group discussions and workshops with government officials and GRIPS students
- Participants' presentations and policy papers
- Exchanges with people from Japan

For details, please visit the CGL's website at <http://www.grips.ac.jp/g-center/en/>.

Campus and City

GRIPS is located in Roppongi, which is a cosmopolitan, multicultural, and bustling area of Tokyo. Roppongi boasts several large shopping and dining complexes and numerous individual restaurants, art museums, performance venues, and shops. Additionally, Roppongi is close to the Japanese Diet and government ministries.

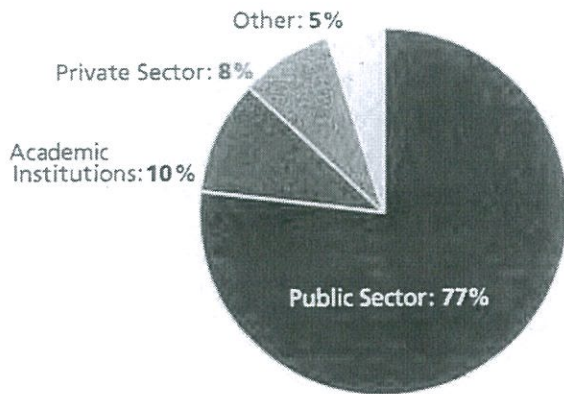
GRIPS is situated on an innovatively designed campus located next to the National Art Center. The graduate school building features spacious, fully equipped classrooms, individual study spaces for students, a sky-lit atrium with panoramic windows and indoor terraces, Japanese-style rooms, a modern fitness center, and a beautiful multi-purpose conference hall.



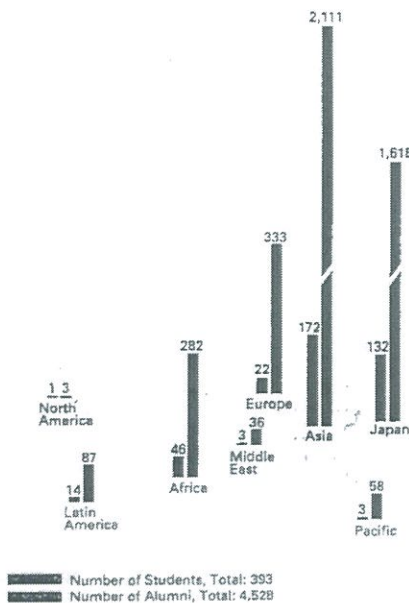
GRIPS Alumni Network

As a GRIPS graduate, you will join an impressive network of over 4,000 alumni who are actively shaping future policies in more than 100 countries around the world. The GRIPS Alumni Network ensures that the connections you have made are lifetime bonds by keeping you in touch with fellow alumni and the school.

Where are GRIPS Alumni working?



GRIPS/GSPS Alumni in the World (as of May 2017)



Asia 23 countries & regions	Bangladesh	152	Bhutan	33	Brunei	3	Cambodia	100	China	216	India	53
	Indonesia	418	Japan	1,618	Republic of Korea	66	Laos	36	Malaysia	115	Maldives	12
	Mongolia	75	Myanmar	103	Nepal	71	Pakistan	86	Philippines	178	Singapore	7
	Sri Lanka	66	Thailand	159	Timor-Leste	1	Viet Nam	159	Taiwan	2		
Pacific 6 countries	Australia	40	Fiji	10	New Zealand	1	Papua New Guinea	5	Samoa	1	Vanuatu	1
North America 2 countries	U.S.A.	2	Canada	1								
Latin America 17 countries	Belize	1	Brazil	7	Chile	2	Colombia	7	Costa Rica	2	Cuba	1
	Dominican Republic	5	Ecuador	4	El Salvador	15	Guatemala	4	Haiti	1	Jamaica	2
	Mexico	1	Nicaragua	12	Paraguay	3	Peru	17	Venezuela	3		
Europe Including CIS countries 30 countries	Albania	3	Armenia	2	Azerbaijan	6	Bulgaria	10	Croatia	1	Czech Republic	12
	Georgia	11	Germany	4	Greece	1	Hungary	12	Iceland	1	Italy	2
	Kazakhstan	45	Kyrgyz Republic	59	Latvia	1	Lithuania	1	Former Yugoslav Republic of Macedonia	2	Moldova	2
	Netherlands	3	Poland	16	Romania	10	Russia	1	Serbia	2	Slovakia	5
	Spain	1	Switzerland	1	Tajikistan	16	Turkmenistan	5	Ukraine	7	Uzbekistan	89
Middle East 7 countries	Afghanistan	13	Iran	3	Jordan	1	Saudi Arabia	2	Syria	2	Turkey	14
	Yemen	1										
Africa 27 countries	Algeria	6	Burundi	1	Cameroon	1	DR Congo	1	Cote d'Ivoire	3	Egypt	11
	Ethiopia	32	Ghana	34	Guinea	1	Kenya	37	Lesotho	1	Liberia	2
	Madagascar	3	Malawi	3	Mauritius	2	Mozambique	2	Nigeria	4	Rwanda	4
	Sierra Leone	5	Republic of South Africa	1	South Sudan	1	Sudan	3	Tanzania	38	Tunisia	1
	Uganda	32	Zambia	29	Zimbabwe	24						

Total number of countries and regions: 112 Total number of alumni: 4,528

GRIPS

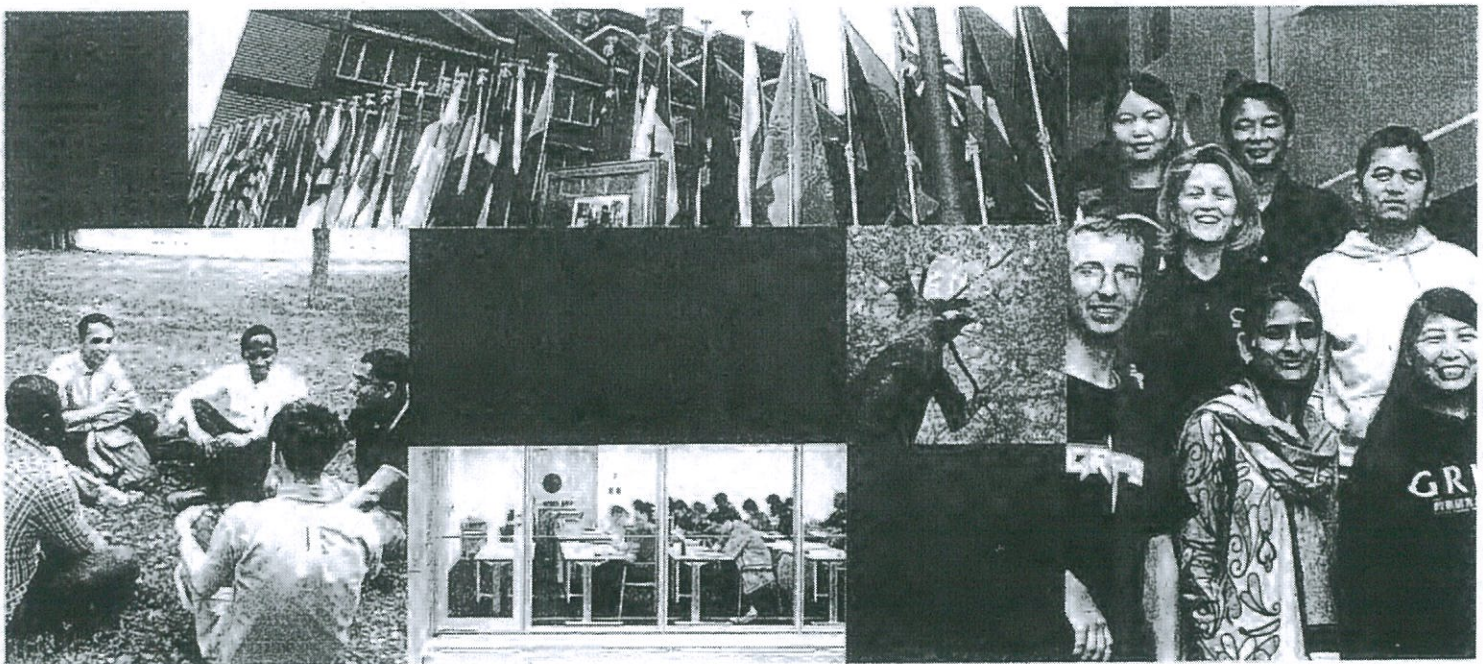
7-22-1 Roppongi, Minato-ku, Tokyo, 106-8677, Japan TEL: +81-3-6439-6000 FAX: +81-3-6439-6010 URL: <http://www.grips.ac.jp/en/>

GRIPS Admissions Office

TEL: +81-3-6439-6046 FAX: +81-3-6439-6050 URL: <http://www.grips.ac.jp/en/admissions/index/> E-mail: admissions@grips.ac.jp

Asian Development Bank – Japan Scholarship Program (ADB-JSP)
Japanese Government (MEXT) Scholarship
Self-Financed Students

One-year Master's Program of Public Policy (MP1)
Two-year Master's Program of Public Policy (MP2)



政策研究大学院大学
NATIONAL GRADUATE INSTITUTE
FOR POLICY STUDIES

1

About GRIPS

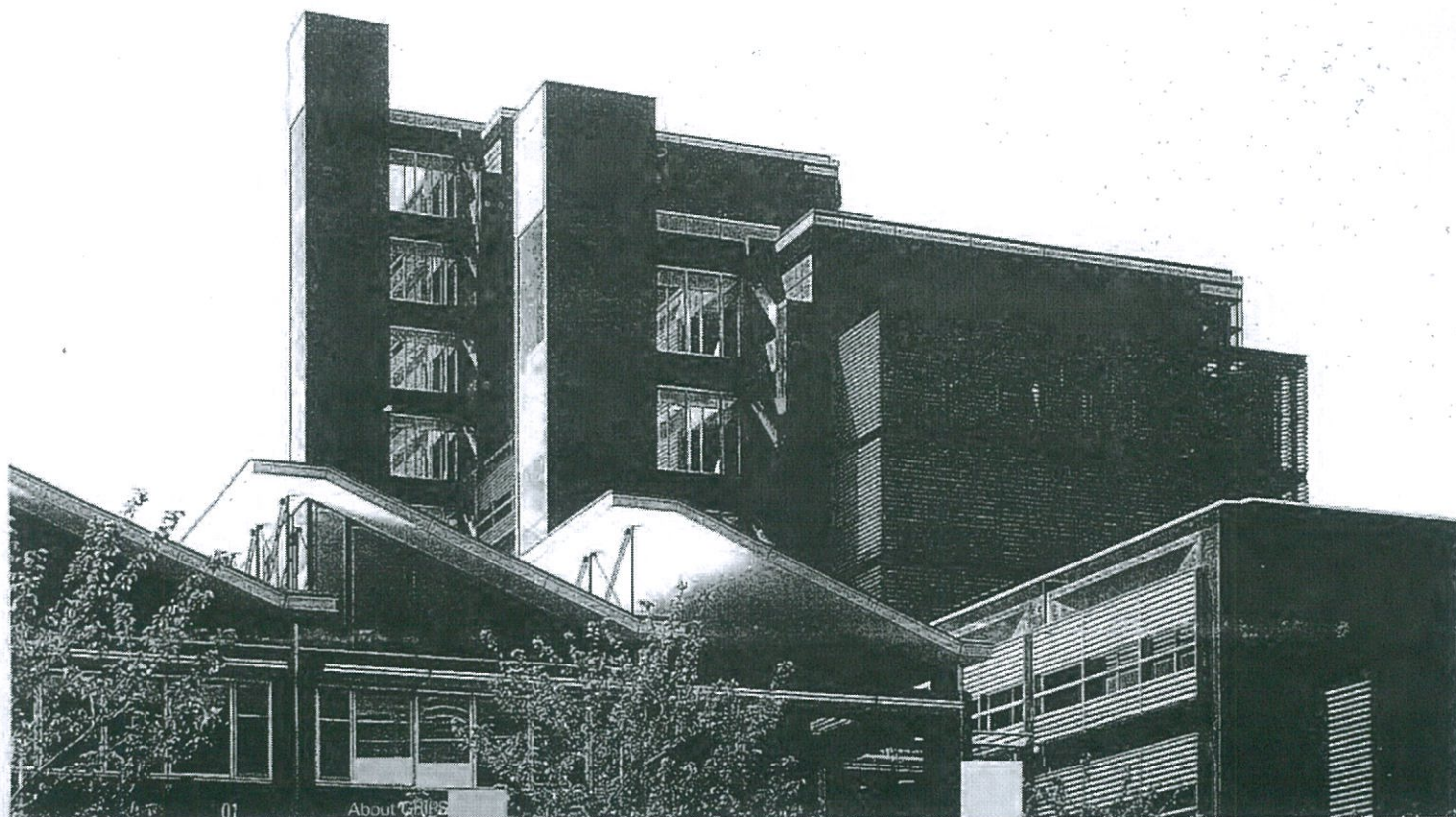
Your Gateway to Global Leadership

GRIPS is a graduate school specializing in education and research for policy studies. The predecessor of GRIPS was the Graduate School of Policy Science (GSPS), which was established in 1977 at Saitama University as the first graduate school for policy studies in Japan. Established in 1997 by the Japanese government, GRIPS inherited the GSPS mantle and eventually moved to Roppongi, an international and cultural hub of Tokyo. GRIPS aims to produce first-class policy makers and conduct cutting-edge research in policy studies. Our slogan, "Gateway to Global Leadership," summarizes the mission of GRIPS: We seek to identify and nurture leaders and managers involved in policy-making on a global scale.

GRIPS is one of the most internationalized graduate schools in the world, with international students comprising nearly 66% of the student body. The class of 2016-2017, for example, which consisted of 421 students, included 279 foreign students from 62 countries. Most GRIPS students are professionals from central and local governments.

GRIPS has been a partner of the Asian Development Bank-Japan Scholarship Program (ADB-JSP) since 2000. In addition, GRIPS has been selected by the Japanese government and international organizations such as the World Bank, the World Customs Organization, and the International Monetary Fund to train mid-career government officials from emerging and developing countries.

Photo: ★ Masao Nishikawa



2

GRIPS' Flagship Program

The Public Policy Program

The Public Policy Program (PPP) is GRIPS' flagship program and it has roots going back to the GSPS. The mission of the PPP is to educate leaders, public managers, and public policy analysts, providing them with the policy tools and ethical principles needed for democratic and efficient governance in the public policy arena. The PPP has produced a steady stream of highly qualified managers and leaders for many important areas of public policy. Graduates of this program become part of an international network of policy professionals.



Director:
Makoto Tanaka
(Applied Economics)

The Public Policy Program has two tracks—a one-year track (MP1) and a two-year track (MP2). The working and teaching language of the PPP is English and all courses are offered in English.

The one-year master's program (MP1) equips mid-career managers and leaders with the fundamental skills and knowledge needed to make them effective managers in the public sector. Students develop familiarity with all phases of the policy cycle. The program awards the degree of Master of Public Policy or Master of Public Administration. Students are required to write a policy report in partial fulfillment of the requirements for the degree.

The two-year master's program (MP2) provides early- and mid-career professionals and junior staff members with the technical skills needed to be professional policy analysts. The program builds a strong foundation for advanced research (including doctoral studies). The program awards the degree of Master of Arts in Public Policy. Students are required to write a master's thesis in partial fulfillment of the requirements for the degree.



Program Design: Interdisciplinary Academic & Professional Education

The curriculum is composed of an introductory course in policy studies, policy debate seminars, and a wide variety of elective courses. All PPP students are provided a common interdisciplinary and analytical foundation through required courses. Students acquire more specialized knowledge by taking recommended courses. A wide range of elective courses enables students to enhance their academic and pragmatic skills. Practical courses are taught by government officials who have extensive experience in policy formulation and implementation. This combination of academic and practical knowledge is the hallmark of a GRIPS education.



Students are provided considerable guidance in the preparation of their policy reports. Students develop research skills, choose a research topic, and develop their policy reports in two policy debate seminars. The Center for Professional Communication (CPC) offers guidance and support at every stage of the writing process, from selecting a topic to writing the final draft.

In addition to the knowledge and skills acquired in the first year, MP2 second-year students receive advanced training and guidance in the technical and practical skills needed for public policy analysis. Students develop and apply their research skills to writing and defending compulsory master's theses. Thus, MP2 provides a strong platform for advanced policy research (including doctoral studies).



Faculty: Cutting-Edge Academic Research for Practical Policy Solutions

MP1 and MP2 are taught by full-time faculty as well as visiting lecturers. The core GRIPS faculty is composed of domestic and international scholars with solid academic backgrounds and outstanding publication records as well as practitioners with extensive experience in the civil service and public policy management.

Concentrations: Your Field of Study

Students can enroll in a wide variety of courses covering the social sciences, including economics, international relations, development policies, operations research, as well as their chosen fields for in-depth policy study. The PPP provides students with a choice of four concentrations (specialties): Economic Policy (EP), International Development Studies (IDS), International Relations (IR), and Public Policy (PP).

Economic Policy (EP) Concentration

The objective of the Economic Policy (EP) Concentration is to provide policy professionals with the skills needed to design and evaluate policy alternatives while emphasizing the application of economic tools to real-world policy problems. Students are strongly recommended to take core and applied courses in economics. Each student is required to produce a policy report/thesis, for which GRIPS faculty members will provide guidance and advice.



**Associate Deputy
Director and
Concentration
Leader: Nobuhiro Hosoe**
(Computational Economics)

Titles of Past Policy Reports and Theses

- Financial Development and Economic Growth in Developing Countries
- Non-Interest Income and Risk: The Empirical Evidence of Thai Commercial Banks
- Assessing the Impact of International Trade on Economic Growth: A Case Study of Ghana
- The Impact of Exchange Rate Movements on Foreign Direct Investment in Uganda
- The Impact of Monetary Policy towards Investment in Indonesia

International Development Studies (IDS) Concentration

The International Development Studies (IDS) Concentration aims to foster technical skills for solving development problems using economics as the basic tool. Specially designed for researchers and policy makers interested in development issues, the curriculum of this concentration covers a wide range of topics in development including gender, poverty, agricultural development, trade and industry, environment, and government and market.



**Concentration Leader:
Jonna P. Estudillo**
(Development Economics)

Titles of Past Policy Reports and Theses

- An Essay on the Evolution of Modern Rice Farming Systems in Asia
- Women in the Labor Market in Vietnam Since the Start of Doi Mo
- Is There a Difference in Outreach by the Legal Status of Microfinance Institutions?
- Nonfarm Sector Development and Women Empowerment in Bangladesh
- Contribution of Community Forestry to Sustainable Forest Management in Nepal

International Relations (IR) Concentration

The International Relations (IR) Concentration aims to foster the development of future policy leaders through intensive training in the methods and approaches necessary for understanding and solving major contemporary challenges in the world. We welcome students with interests in international affairs, covering a variety of issues from security to political economy, as well as those who wish to analyze domestic politics or political economy within the context of an individual country or from a comparative perspective. Both qualitative and quantitative methods can be adopted for analyses.



Concentration Leader:
Hyoung Kyu Chey
(International Political Economy)

Titles of Past Policy Reports and Theses

- Question of Existence: Rising Sea Levels in the Pacific and New Zealand Policy Options
- R2P in East and Southeast Asia
- Small States as Negotiators: A Comparison of Cambodia and Laos with Reference to the South China Sea Issue
- Ghana's Regional Integration Efforts in Africa: The Post-Nkrumah Era in Review
- Building Trust in the Relationship with China: From Vietnam's Perspective

Public Policy (PP) Concentration

The objective of the Public Policy (PP) Concentration is to provide students with knowledge of various policy issues from many different disciplinary viewpoints to support their understanding and investigation of policy-related problems. Students are required to write a policy proposal based on the application of either quantitative or qualitative analytical tools to a policy issue. In preparing policy reports, students should (a) collect quantitative and/or qualitative data, (b) analyze the data, and (c) write a policy proposal based on their investigation.



Concentration Leaders:
Tatsuo Oyama
(Operations Research)

Titles of Past Policy Reports and Theses

- Public Service Reform Programme in Tanzania
- Thai Consumers' Purchasing Perception toward Payment Instruments for Point-of-Sale Transactions
- Optimal Mechanisms for Knowledge Sharing in International and Development Cooperation
- Food Safety Concerns in Bangladesh



Concentration Leaders:
Ikuo Shimomura
(Public Administration)

Curriculum

Required Courses

Introduction to Public Policy Studies
 Policy Debate Seminar I & II.
 Independent Study (Thesis) [only for MP2]

Required or Recommended Courses by Concentration

Economic Policy	International Development Studies	International Relations	Public Policy
Microeconomics I	Microeconomics I	International Relations	Government and Market
Microeconomics II	Microeconomics II	International Security Studies	Introduction to Applied Econometrics
Macroeconomics I	Essential Microeconomics	International Political Economy	Trade and Industrial Development
Macroeconomics II	Macroeconomics I	International Relations in Europe	Public Economics
Introduction to Applied Economics	Macroeconomics II	Military Operations, Strategy, and Policy	Resource and Energy Economics
	Essential Macroeconomics	Development Cooperation Policy	Development Economics
	Development Economics	Transnational Organized Crime and Security	International Security Studies
	Introductory Statistics	Non-Traditional Security	Structure and Process of Government
	Development Economics	Comparative Politics	International Political Economy of Money and Finance
	Introductory Statistics Strategies of Economic	Comparative Political Economy	Introduction to Quantitative Methods
	Development	Comparative State Formation	Introductory Statistics
	Poverty Alleviation	Structure and Process of Government	
	Introduction to Applied Econometrics	Political Economy of Modern Japan	
	Trade and Industrial Development	Government and Politics in Japan	
	Gender and Development	Comparative Development Studies of Asia	
	Government and Market	State and Politics in Southeast Asia	
	Agricultural Economics	State and Politics in Africa	
	Environmental Economics	Politics of Global Money and Finance	
	Cost Benefit Analysis I	Topics on International Relations	
	Cost Benefit Analysis II	Institutions in Policymaking	
	Structure and Process of Government		
	Introduction to Quantitative Methods		
	Comparative Analysis on Science, Technology and Innovation Policy		
	Introduction to Applied Econometrics		
	GRIPS Forum		
	Resource and Energy Economics		
	Agricultural Development		
	Comparative Political Economy		
	Comparative Development Studies of Asia		

Note : The above table lists some of the required and recommended courses by concentration.



GRIPS Summer Program

The mission of the GRIPS Summer Program is to enhance participants' practical policy-making skills through activities that require participants to apply their discipline-based knowledge to various real-life policy issues. The GRIPS Summer Program is organized into four major activity areas: seminars, symposia, and conferences; skill-enhancing workshops; research tours and field trips; and sports, entertainment, and culture.

1. Seminars, Symposiums, and Student Conference
 - BBL Seminars
 - H-LAB Talent Show by students
 - Japan's Lessons for Europe's Crisis Management
 - Student Conference—Public Policy, Innovation and Development
2. Skill Enhancing and Policy Workshops
 - Workshop on strategic negotiations
 - Media skills for policy makers
 - English for social networking
 - Twitter for better government
 - Grant proposal writing
3. Research Tours & Fieldtrips
 - Haneda Chronogate Logistics Terminal tour
 - Mt. Fuji hiking
 - J-Power thermal power plant tour.
 - Miraikan Science Museum tour
 - Visits in Ministry of Defense, Bank of Japan, and Embassies
4. Sports, Entertainment, and Culture
 - Bon Odori Dance: "Ropponjin Ondo"
 - Introduction to Japanese Tea Ceremony
 - Cultural exchange with junior high school students



4 Alumni



Among the greatest benefits and joys of studying at GRIPS are the quality and diversity of the student community. The connections you make at GRIPS are a valuable part of your degree. The GRIPS Alumni Network will ensure lifetime bonds by keeping you in touch with fellow alumni and the school.

As a GRIPS graduate, you will join an impressive network of around 3,700 alumni who are actively shaping and administering public policies in more than 38 countries around the world. We offer a variety of ways to remain engaged with GRIPS and strengthen your ties with fellow alumni around the globe. These include alumni reunions, seminars, a searchable alumni directory and online networking opportunities utilizing social media such as Facebook and LinkedIn.

Alumni Voices



Bojan Petrovski (Macedonia, 2008) Public Policy Program
State Counselor, Office of the Prime Minister of the Republic of Macedonia

Studying at the National Graduate Institute for Policy Studies was a life-changing experience for me from many viewpoints. First and foremost, it enabled me to grow academically and learn many new aspects of policy making and implementation that had been missing in my prior education. Then, it allowed me to get acquainted with Japan, one of the most exciting places in the world, rich with both tradition and modern life. Finally, graduating from GRIPS turned out to be the key asset for career advancement that brought me to the next level within the public institutions of my country. I warmly recommend taking my studies at GRIPS to any public service professional!

**Edward Tenywa (Uganda, 2011) One-year Master's Program of Public Policy****Personal Assistant to Deputy Governor, Governor's Office, Bank of Uganda**

Further advancement of my career banking career required the search for breadth and depth of theoretical and practical knowledge in economics and public policy. The selfless and dedicated staff, the multidisciplinary approach to studies and multicultural environment at GRIPS all ensured that I had more than I had envisaged. This life defining and changing experience was truly my gateway to institutional and global leadership.

**Marcelo Echague Pastore (Paraguay, 2013)****Two-year Master's program of Public Policy****Director, Economic Studies and Financial Analysis, Securities and Exchange Commission of Paraguay**

The discovery of GRIPS was a great joy, as it offers programs that are very inter-disciplinary in their scope, by mixing Economics, Political Science, International Security Studies and so on. Moreover, this university also proved to be extremely open-minded, enabling me to interact and exchange experiences with people that would certainly not easily meet in other parts of the world. Studying at GRIPS has also been extremely positive in terms of learning, by giving me the chance to expand my horizons such as with the International Student Council, together with the numerous invitation to several high-level discussions, meetings and panel debates with top professionals in their fields, including public servants, academics, and executives from the private sector. Such an experience has definitely been helpful in preparing me (or my present and future endeavors). Honestly, I do not think I would have gotten my current job at the Securities and Exchange Commission of Paraguay if I was not for GRIPS.

**Ugyen Wangchuk (Bhutan, 2014) Two-year Master's Program of Public Policy****Program Officer, Children Division, National Commission for Women and Children Royal Government of Bhutan**

Growing from Bhutan, the Land of Happiness to be honest, initially for about few weeks, I was literally feeling homesick wanting to go back to my country. With the support from the student office I slowly acclimatized myself into the system. Days, weeks and months passed and I started feeling like "well, this is the place I wanted to live and study." GRIPS, with lot of international students and Japanese students is another reality by itself. When we get to know many friends across the world and knowing their culture has broadened my thinking and understanding of the universe, the Professors are talented and full of knowledge and the most important was their willingness to help the student at any point of time. Faculties working in GRIPS were such a lovely person, making us feel like home. I say my two years stay in Japan had trained and prepared me both mentally and professionally to take up any responsibility.

**Keiko Fukumori (Japan, 2014) One-year Master's Program of Public Policy****Representative, Japan International Cooperation Agency Indonesia Office**

GRIPS is a unique school with an excellent public policy and administration program. It offers not only theoretical studies but also various case studies from other countries, including developing countries, which are useful to apply work in business and administration. The learning environment at GRIPS is so international that you can forget that this is a school in Tokyo. You can take all your course in English and the program can be customized based on your personal interests. I focused on economics and econometrics, and I acquired many theoretical and analytical skills for public policy work. The student faculty ratio is very good and you can ask the teacher to raise the level if you would like to learn more. Students such a unique and precious time in academics with people from various countries will surely be one of my lifetime treasures.



Admissions



The application procedure should be completed online by all candidates for MP1 and MP2. Applicants need to obtain an ID and Password prior to online application. The Online Entry Form and Online Application Form must be submitted by the appropriate deadlines. Details can be found at the GRIPS Admissions website: (<http://www.grips.ac.jp/en/admissions/index/>).

The online application process of GRIPS can be complicated and confusing because of varying requirements and policies for different programs and scholarships. The GRIPS Admissions Office will help you work through any problems you encounter.

Qualifications

Candidates must hold a Bachelor's degree from a recognized/accredited university and must satisfy the English language requirement with a minimum TOEFL score of 550 (iBT 79) or IELTS Academic 6.0. A record of solid academic performance at the undergraduate level is expected. Work experience in government or other policy-oriented institutions is highly desirable. Evidence of managerial experience and leadership potential are looked on very favorably, especially for MP1. Although there is no formal entrance exam, the Public Policy Program may administer special exams in such areas as English writing and mathematics proficiency. Telephone and video interviews may also be conducted. Some in-person interviews may be arranged if circumstances permit.

Funding Options

There are several ways to finance your education in the PPP. The traditional way is to obtain one of several scholarships allocated to GRIPS by various sponsoring organizations.

The two primary sources of funds are the **Japanese Government (MEXT)** and the **Asian Development Bank (ADB)**. MEXT and ADB provide a fixed number of scholarships both for MP1 and MP2. Candidates who apply by the early application deadline (November) will be considered for one of these scholarships.

The choice of scholarship will be determined by GRIPS based on constraints imposed by the scholarship providers (see the GRIPS website for details).

Scholarships are allocated on a competitive basis from the pool of early applicants.

Self-financing, including all externally acquired funds, is another option. Since GRIPS is a Japanese

national university, our tuition and fees are very low and quite competitive on an international basis. This is particularly true given the high quality of our education and other services. As a consequence, an increasing number of candidates apply to GRIPS with their personal funds or with scholarships obtained from external sources such as their home governments or non-governmental organizations.

Scholarship Eligibility and details for MP1&2 Program Provided by GRIPS

Eligibility Criteria	Scholarship Coverage
Japanese Government (MEXT) Scholarship	
<ul style="list-style-type: none"> • Under 35 years of age (as of April 1 of the year of enrollment) • Nationals of countries with which Japan has diplomatic relations • Non-residents of Japan 	<ul style="list-style-type: none"> • Monthly stipend • Application fee, admission fee, and tuition • Round-trip economy-class air ticket between your home country to Japan
Asian Development Bank – Japan Scholarship Program (ADB-JSP)	
<ul style="list-style-type: none"> • Under 36 years of age (as of April 1 of the year of enrollment) • Nationals of ADB's developing member countries • At least 2 years of full-time professional work experience (at the time of application deadline) 	<ul style="list-style-type: none"> • Monthly stipend • Application fee, admission fee, and tuition • Round-trip economy-class air ticket between your home country and Japan • Research allowance, Book allowance, Arrival allowance, and Miscellaneous expenses

Please refer <http://www.grips.ac.jp/en/admissions/index/> for details.

Important Dates

Previous Year	Applicants seeking MEXT/ADB Scholarships	Externally funded and self-financed applicants
	Year of Enrollment	Aug Online Application Open Nov Deadline mid Nov. Dec Feb Result Notification Mar Apr May Jun Jul Aug Visa, etc. Oct Program Starts

An orientation program is provided for students in early October. The academic year runs from October through the following September.

6

Student Support and Resources

One unique aspect of GRIPS is our extensive support system for assisting students in their daily living. We consider this aspect of your lives to be every bit as important as your academic life, especially for foreign scholars unfamiliar with Japan. As international students have comprised, on average, about 60% of the GRIPS student body over the last 10 years, we have developed comprehensive services to assist students in their day-to-day living.

The Student Office organizes orientation programs for incoming students and assists arriving international students in getting organized and settled in Japan. It also organizes a number of social events and activities, including field trips and Japanese cultural experiences. The Student Office also functions as a hub to promote meaningful interaction and understanding between Japanese and foreign nationals.

Faculty

GRIPS has approximately 80 full-time faculty members from a variety of backgrounds. Many of them have served as central and local government officials, diplomats, bankers or business executives. This enables an effective combination of rigorous academic courses complemented by professional expertise and experience.

For more on our faculty members, please see <http://www.grips.ac.jp/en/about/directory/>

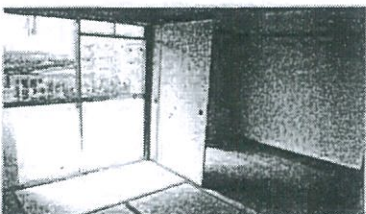
Accommodation

Accommodation is provided in the Tokyo International Exchange Center (TIEC), operated by the Japan Student Services Organization (JASSO), in GRIPS International House, or in private apartments recommended by the GRIPS Student Office.

Misato Housing Complex

In Saitama prefecture, nearby Lalaport shopping mall that boasts around 200 shops and restaurants flanked by enormous IKEA and Costco stores.

Room Types : 1Room w/kitchen
2Rooms w/kitchen



GRIPS International House I

In Nakano, built in 2009

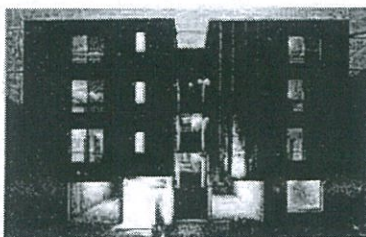
Room Types : Single, Couple



GRIPS International House II

In Nakano, built in 2010

Room Types : Single, Couple



Resources

Center for Professional Communication

The mission of the Center for Professional Communication is to support GRIPS students, faculty, and staff in developing effective professional

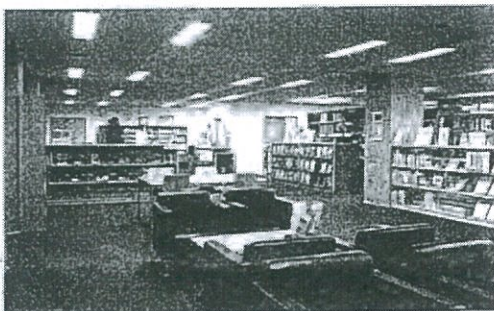


communication skills and competencies needed to communicate productively in an environment of multiple stakeholders. To this end, we offer a range of instruction and support in fundamental areas of professional communication in English and Japanese, including policy paper writing, professional speaking, grant proposal writing, and digital communications. We

also provide opportunities for cultural and academic exchanges through a self-access learning center, organize seminars and special events related to all aspects of professional communication, and prepare customized materials for students and staff on academic and professional writing and language learning.

Library

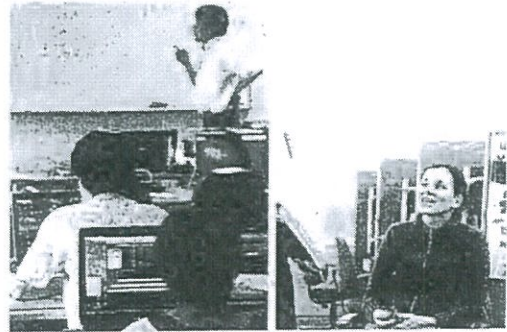
- Extensive collection of publications in the field of policy studies, collected from around the world
- Collection contains over 150,000 volumes, including reference books, statistical collections, working papers, and government documents
- Large collections of periodicals that include more than 10,000 journals, many of which are available online
- Well-trained staff are equipped to respond to research-related requests



Facilities

Student Rooms and Computers

- Each student is provided with a study space and laptop computer, accessible 24 hours a day
- A computer help desk is open to all students during regular working hours



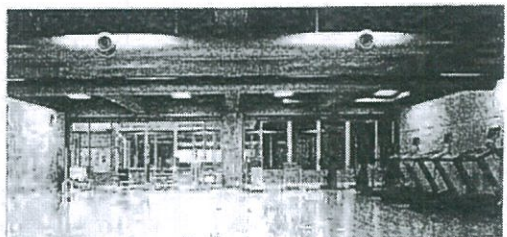
Health Services Center

- In-house health clinic
- Nurse on duty daily, doctor available several days a week
- Provides medical advice, basic medical examinations
- Will refer to an appropriate hospital or specialist when necessary



Fitness Center

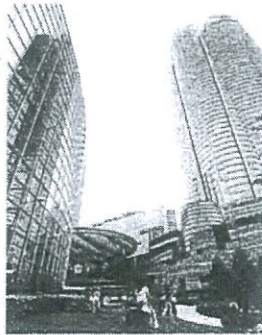
- Running machines
- Training equipment
- Showers
- DVD for exercises
- Free use by students, faculty, and staff



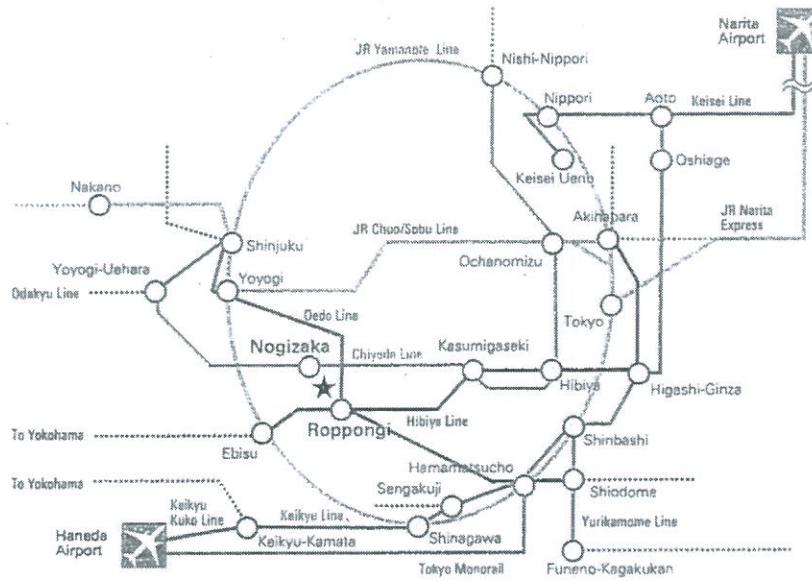
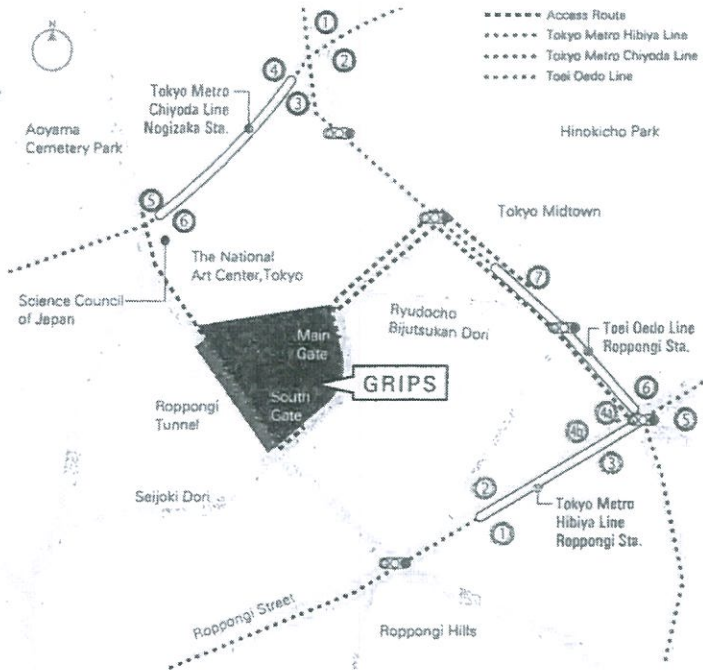
Address and Contact Information

Getting to GRIPS

The GRIPS building is located in the center of Tokyo, conveniently accessible by public transport. Both Nogizaka Station on the Chiyoda Line and Roppongi Station on the Oedo and Hibiya Lines are within 10 minutes walking distance.



Roppongi Hills



National Graduate Institute for Policy Studies

7-22-1 Roppongi, Minato-ku, Tokyo 106-8677 Japan
 Tel: +81-(0)3-6439-6000 Fax: +81-(0)3-6439-6010
<http://www.grips.ac.jp>

Admissions Office

Tel: +81-(0)3-6439-6046 Fax: +81-(0)3-6439-6050
admissions@grips.ac.jp

2017.04

